

2019 Annual Report



MINNESOTA
CREDIT UNION FOUNDATION



CHAIR'S REPORT

The Minnesota Credit Union Foundation is pleased to report a successful year in 2019. Focused on financial education and professional development initiatives, the Minnesota Credit Union Foundation provides the resources for credit unions and communities to prosper and thrive. Each year the Foundation commits to fund financial education grants and professional development opportunities for credit union staff and volunteers.

The following highlights the Foundation's efforts during the year:

- Awarded financial education grants to four credit unions.
- Governmental Affairs Conference and Credit Union Development Educator scholarship programs provide funding to five credit union professionals to attend national training opportunities in 2020.
- Supported 16 professionals in receiving their Certified Credit Union Financial Counselor (CCUFC) designation through the Enhance FiCEP training program.
- Honored eight Credit Union Builders.
- Raised \$14,000 through sales of the Great Minnesota Handshake collaboration beer at the Minnesota State Fair.

As a 501(c)(3) tax-exempt charitable organization, the Foundation is dependent on the support of credit unions, partners and individual contributors. Your generosity is appreciated, and the Foundation Board looks forward to your continued support in the year to come.



Kathleen Harrington
Chair, Minnesota Credit Union Foundation Board of Directors
President, Heartland Credit Union

MINNESOTA CREDIT UNION FOUNDATION | BOARD OF DIRECTORS

Kathleen Harrington, Chair
Heartland Credit Union, Inver Grove Heights

Dana Garrett, Vice Chair
North Memorial Federal Credit Union, Robbinsdale

Doug Hallstrom, Secretary/Treasurer
Minnco Credit Union, Cambridge

Glen Durbahn
Hiway Federal Credit Union, St. Paul

Mary Hansen
Mayo Employees Federal Credit Union, Rochester

Doug Ralston
Centricity Credit Union, Hermantown

Greg Worthen
Richfield Bloomington Credit Union, Bloomington

Andrea Molnau, Executive Director

Mark Cummins, President



CONTRIBUTION PROGRAMS

GENERAL FUND CONTRIBUTIONS

All contributions to the general fund go to support its grant-making in the areas of financial education, professional development, disaster relief and other projects/initiatives that fit within MnCUF's mission. MnCUF accepts personal and corporate contributions.

COMMUNITY INVESTMENT FUND The National Credit Union Foundation's Community Investment Fund (CIF) benefits credit unions and their members through support of financial education efforts. Credit unions investing in CIF receive 50 percent of the dividend, and the remaining 50 percent is split evenly between the National and Minnesota Credit Union Foundations. Currently, 8 Minnesota credit unions participate in CIF.

FOUNDATION GENERAL FUND CONTRIBUTORS | 2019

HERO (\$5,000+)

Affinity Plus Federal CU
Blue Plate Group
Thrivent Federal CU

CHAMPION (\$2,500-\$4,999) GUARDIAN (\$1,000-\$2,499)

Centricity CU
City & County CU
Financial One CU
Hiway FCU
Ideal CU
Members Coop CU
Minnco CU
North Memorial FCU
Novation CU
SPIRE CU

Associated Healthcare CU
Co-op CU of Montevideo
Embarrass Vermillion FCU
Firefly CU
First Alliance CU
Fulda Area CU
Heartland CU
Mayo Employees FCU
Mid Minnesota FCU
Minnesota Power ECU

Minnesota Valley FCU
Northwoods CU
Red Wing CU
Richfield Bloomington CU
SharePoint Credit Union
South Metro FCU
SouthPoint Financial CU
Wings Financial CU

BENEFACTOR (\$500-\$999)

Izale Financial Group LLC
Pipefitters Steamfitters CU
PSCU Financial Services
Star Choice CU
Toro Employees FCU

PATRON (\$250-\$499)

Bennett, Mastin & Kosmak, Inc.
Members Loyalty Group
Riverview CU
QRL Financial Services

FRIEND (UP TO \$249)

AE Goetze ECU
Amazon Smile
Catholic United Financial
Electrus FCU
Fairmont Schools ECU
First Pace Credit Union
Hansen, Mary
HBI Employees CU
Mightycause Charitable Foundation
Northern Communities CU

Northern Energy Federal CU
Northern States Power - St. Paul
Red Lake CO-OP Federal CU
Starcor CU
Teamsters Credit Union
Topline FCU
Two Harbors FCU
United Employees CU
Wakota FCU



CONTRIBUTION PROGRAMS

CREDIT UNION BUILDER AWARD

The Credit Union Builder Award allows credit unions and organizations to make contributions in honor or recognition of, or in memory of, individuals who have been instrumental in their success. In 2019, 8 outstanding individuals were recognized with a Credit Union Builder Award.

2019 CREDIT UNION BUILDER HONOREES:

Ron Glasgow, honorarium made by SPIRE Credit Union

Ron Glasgow has been a strong supporter of credit unions for nearly 60 years. In 1960, he first took on the role of Treasurer/Manager of a credit union in Iowa and then spent the next 34 years with the CUNA Mutual Group. In 2008, Glasgow joined the SPIRE Credit Union Board of Directors and served as Vice Chair from 2014 until the end of 2019.

Jon Seeman, honorarium made by SPIRE Credit Union

Jon Seeman began his credit union career at TruStone Financial Federal Credit Union (the former Teacher Federal Credit Union) in 1996, and became the Interim President/CEO. In 2008, Jon accepted the position of President/CEO of City-County Federal Credit Union and then joined the team at SPIRE Credit Union as their Chief Financial Officer in 2010. Jon was named the CFO of the Year in 2015 by the Minneapolis/St. Paul Business Journal. He retired at the end of 2019.

Dick Nesvold, honorarium made by SouthPoint Financial Credit Union

Dick Nesvold, retired CEO of SouthPoint Financial Credit Union, served in that role for 23 years. He also represented Minnesota Credit Unions as a member of the Cooperative Network Board of Directors and as former Board Chair of the Minnesota Credit Union Network.

Linda Jacobson, honorarium made by Fulda Area Credit Union

Linda Jacobson, the retiring CEO of Fulda Area Credit Union was instrumental in the growth of the credit union for over 30 years. Linda's leadership has helped Fulda Area CU grow to almost \$120M in assets and over 10,000 members during her tenure as CEO.

Marlin "Andy" Anderson, honorarium made by Minnco Credit Union

Since the late 70s, Andy has faithfully attended to the needs of the credit union by serving on the Board. Andy has been actively involved in the success and growth of the credit union, including the construction, remodeling, and expansion of all Minnco locations. He has attended over 500 meetings, numerous conferences, network and chapter events.

Joyce Kalbakdalen, honorarium made by Wings Financial Credit Union

Kalbakdalen served as CEO of Soo Select Credit Union for 27 years. In late 2018, Soo Select members voted to merge with Wings Financial. Soo Select Credit Union was founded in 1953 to serve employees of the Soo Line Railroad in the Thief River Falls, Minnesota area. Soo Select grew to \$15 million in assets and 2,800 members under her leadership.

Bridget Petersen, honorarium made by SPIRE Credit Union

Bridget Petersen, Market VP of Community Outreach, joined SPIRE through a merger with Greater MN CU in 2015, where she held the position of VP of HR and Training. In her current role, Petersen oversees SPIRE's philanthropy, public and media functions and financial literacy efforts upholding the credit union's values.

Leonard Luoma, honorarium made by Centricity Credit Union.

Leonard Luoma served Centricity Credit Union on the Board of Directors for the past 43 years. Luoma recently stepped down as Board Chair and has now taken on an advisory role to the Board of Directors.



GRANT PROGRAMS

In total, the Minnesota Credit Union Foundation funded \$53,047 in grants in 2019.

FINANCIAL EDUCATION GRANTS

A total of \$8,677 was awarded through the Financial Education Grants program to four credit unions in 2019 for initiatives that demonstrated credit union value, community impact, collaboration and creativity.

| | |
|-------------------------------|--|
| Firefly Credit Union | Financial education podcast |
| Heartland Credit Union | Personal finance library |
| Two Harbors Credit Union | "Lunch and Learn" high school classrooms conversation |
| United Educators Credit Union | Reality Fair/ Financial Literacy Simulation for At Risk Students |

PROFESSIONAL DEVELOPMENT GRANTS

Professional Development Grants fund opportunities for credit union professionals and volunteers to continue their education and sustain the credit union movement. In addition to general professional development grants, the Small Credit Union Grant Program is a sub-program which provides expedited approval for small credit unions meeting certain criteria. Scholarship funding is also available for the CUNA Governmental Affairs Conference and NCUF Credit Union Development Educator training.

In 2019, the Foundation provided professional development grants in an amount of \$20,747.

FINANCIAL & AUDIT PROFESSIONALS GRANTS

The Financial & Audit Professionals Grant Fund was established in late 2014 through a generous contribution from Rich Gabrielson, a CPA who worked with Minnesota credit union supervisory committees, boards of directors and management throughout his 36-year career. Gabrielson retired from CliftonLarsonAllen, LLP at the end of 2013.

Funding from the Financial & Audit Professionals Grant program is intended to cover or defray the costs for credit union professionals and/or volunteers to attend timely and accurate educational events, conferences and seminars on financial and audit-related topics. Unlike MnCUF's other grants which are reimbursement grants, the Financial & Audit Professionals Grant pre-funds opportunities throughout the upcoming year.

In 2019, \$3,500 was awarded to two individuals to attend American Institute of CPAs training opportunities.



The Enhanced Financial Counseling Certification Program (FiCEP) is a unique program that trains staff to help members better prepare for their future and to assist when they are faced with financial difficulties. Upon completion of this 8 week training program, participants receive the Certified Credit Union Financial Counselor (CCUFC) designation. In 2019, MnCUF generously committed funding to support the cost of the training.

The following professionals earned a Certified Credit Union Financial Counselor (CCUFC) designation in 2019:

| | |
|----------------------------------|---|
| Tim Anderson, CCUFC | Members Cooperative CU |
| Marilyn Chopp, CCUFC | North Memorial FCU |
| Dawn R Dunkelberger, CCUE, CCUFC | North Memorial FCU |
| Sharesse Edwards, CCUFC | Centricity CU |
| Holly Gressman, CCUFC | Firefly Credit Union |
| Cory Grosche, CCUFC | Mid Minnesota FCU |
| Kurt Halverson, CCUFC | HomeTown FCU |
| Tina M Jones, CUDE, CCUFC | Hiway FCU |
| Adrienne Knott, CCUFC | Firefly Credit Union |
| Christopher Lamminen CCUFC | Northern States Power St Paul CU |
| Jeanne Lee, CCUFC | Mid Minnesota FCU |
| Ann Lewandowski, CCUFC | TopLine FCU |
| Brittany Martin, CCUFC | Mill City, A Division of City & County Credit Union |
| Raina Matthews, CCUFC | North Memorial FCU |
| Carrie Reiersen CCUFC | Mid Minnesota FCU |
| Derek Schmidt, CCUFC | Nocation Credit Union |

MINNESOTA CREDIT UNION FOUNDATION | COMMITTEES



FOUNDATION SCHOLARSHIP COUNCIL

The Foundation Scholarship Council (FSC), formerly the Family Involvement Council, strives to build credit union brand awareness and strengthen member relationships through its scholarship program. The FSC annual scholarship program is made possible through its annual silent auction and new Dice and Ice Fundraiser. Since 1997, over 340 scholarships have been awarded, totaling \$209,000. 45 Minnesota Credit Unions participated in the Foundation Scholarship Council in 2019.

FOUNDATION SCHOLARSHIP COUNCIL MEMBERS

Vicki Erickson, Co-Chair

Topline Federal Credit Union

Amanda Kissner, Co-Chair

Wakota Federal Credit Union

Deb Cariveau-Rogers, Secretary

Hiway Federal Credit Union

Bailey Germain, Treasurer

City & County Credit Union

Joann Ericksen

Minnesota Valley Federal Credit Union

Steve Glonchak

Members Cooperative Credit Union

Diane Hinz

Novation Credit Union

Angela Mattson

Minnesota Catholic Credit Union

Tamilee Taylor-Depre

Centricity Credit Union

Autumn Thiel

Energy Services Federal Credit Union

Kristine Rutten

St. Cloud Federal Credit Union

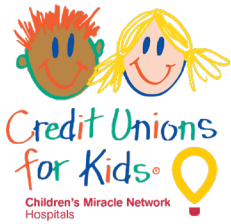
***Ben Hering**

Committee Liaison

FOUNDATION SCHOLARSHIP COUNCIL CONTRIBUTORS

| | | |
|--|--------------------------------------|---------------------------------------|
| 3M | Glonchak, Steve | Old Log Theater |
| AE Goetze ECU | Guild Photography | OnApproach |
| Affinity Plus FCU | Guthrie Theater | Pierce, Patrick |
| Allied Solutions, LLC | Harland Clarke | Red Lake CO-OP Federal CU |
| Alkami | Heartland CU | Richfield Bloomington CU |
| Anoka Hennepin CU | Hubbard Broadcasting (My Talk Radio) | Riverview CU |
| Applebees | Hiway FCU | Royal CU |
| B North Photography | Ideal CU | Sackett, John |
| Bargfrede, Kent | Jensen, Roxi | SharePoint CU |
| Baumann, Mark | Jungle Theater | SouthPoint Financial CU |
| Boden, Dave | KS95 | SPIRE CU |
| Bolger | Kahat, Steve | St. Cloud Financial CU |
| Brainerd BN CU | Mall of America | Stoltz, Daniel |
| Brave New Workshop | Mayo Employees FCU | Swim Creative/Minn Box |
| Case Financial | Members Coop CU | Taylors Fall Scenic Boat Tours |
| Centricity CU | Mid Minnesota FCU | Taylor, Margaret |
| City & County CU | Minnesota Catholic CU | Theater in the Round |
| Co-op CU of Montevideo | Minnesota Lynx | Teamsters Credit Union |
| Comcast Spotlight | Minnesota Power Employees CU | The Servion Group |
| Commonwealth Bar | Minnesota Science Museum | Topline FCU |
| Cooperative Network | MSU Mankato Athletics | Toro Employees FCU |
| CU Recovery and the Loan Service Center | Minnesota Renaissance Festival | Total Wine & More |
| CUNA Mutual Group | Minnesota State Fair | Tower, Carol |
| Daily Printing, Inc. | Minnesota Valley FCU | TruLync |
| Dangerous <am | MnCUN | TruStone Financial CU |
| Doucette, Daryl | Mower County Employees CU | Twin Cities PBS |
| Electrus FCU | North Shore Scenic Railroad | Two Harbors FCU |
| Energy Services FCU\ Fassbinder, Maureen | Northwoods CU | United Educators CU |
| Firefly CU | Northern Communities CU | Wings Financial CU |
| First Alliance CU | Novation CU | Wings Financial Foundation |
| First Pace CU | Nusource Financial, Inc. | Wood Magic |
| Fulda Area CU | Oak Tree Business Systems | WOW! Zone Family Entertainment Center |

MINNESOTA CREDIT UNION FOUNDATION | COMMITTEES



MnCU4Kids is a collaboration of credit unions, chapters, leagues and business partners engaged in fundraising activities to benefit Children's Miracle Network-affiliate hospitals. All money raised through Minnesota's Credit Unions for Kids program supports Gillette Children's Specialty Healthcare, which treats children with disabilities and chronic conditions. Gillette is based in St. Paul, with clinics located around the state. Credit Unions for Kids is a national program.

Minnesota Credit Unions for Kids Committee (MnCU4Kids) raised \$159,433 in 2019 for Gillette Children's Specialty Healthcare.

MN CU4KIDS COMMITTEE MEMBERS

Winnie Koivisto, Co-Chair
NorthRidge Community Credit Union
Caitlin Barrineau, Co-Chair
Anoka Hennepin Credit Union
Megan Primeau, Secretary
City & County Credit Union
Dave Engler
Hiway Federal Credit Union
Marty Kelly
Firefly Credit Union
Mick Olson
TopLine Federal Credit Union

Jaime Preshiren
Embarrass Vermillion Federal Credit Union
Brad Scholl
Minnco Credit Union
Sharon Vandehoef
Heartland Credit Union
Becky Holst
Gillette Children's Specialty Healthcare
***Ben Hering**
Committee Liaison

CREDIT UNIONS FOR KIDS CONTRIBUTORS

| | | |
|----------------------------------|----------------------------------|----------------------------------|
| Affinity Plus FCU | Enterprise Holdings | North Star CU |
| Allied Solutions, LLC | Firefly CU | Northern Communities CU |
| Alloya Corporate FCU | Harland Clarke | Northern States Power - St. Paul |
| Anoka Hennepin CU | Heartland CU | NorthRidge Community CU |
| Archer Doig Chapter | Hiawatha Chapter | Par 3 IT, LLP |
| Banker's Equipment Service, Inc. | Hiway FCU | Pinpoint Direct Marketing |
| Case & Associates | La Macchia Group | PSCU Financial Services |
| Central Hanna ECU | Lakes & Pines Chapter | Richfield/Bloomington CU |
| Central MN Chapter | Location Serices | Royal CU |
| Centricity CU | Lockton Companies | South Metro FCU |
| City & County CU | Main Street | SouthPoint Financial CU |
| Clifton, Larson, Allen, LLP | Marquis Software Solutions, Inc. | SPIRE CU |
| Connect Financial Software | Mayers, Jenny | St. Cloud Financial CU |
| Co-op CU of Montevideo | Mayo Employees FCU | The Servion Group |
| Crow Wing Power CU | Medica | TopLine FCU |
| CU Direct Corporation | Members Coop CU | Trellance, Inc. |
| CU Recovery | MidMinnesota FCU | True Media |
| CUNA Mutual Group | Minnco CU | Trulync Incorporated |
| Deluxe Corporation | Minnesota Repossessors, Inc. | Two Harbors FCU |
| Edge One | MnCUN | USAuto Fleet Group - CU Cardeal |
| Embarrass Vermillion FCU | MoneyGram Payment Systems | Wipfli, LLP |
| Energy Services FCU | North Memorial FCU | |

MINNESOTA CREDIT UNION FOUNDATION | FINANCIALS

STATEMENT OF FINANCIAL POSITION AS OF DEC. 31, 2019

ASSETS

| | |
|------------------------------|------------|
| Current Assets | |
| Checking/Savings | \$245,293 |
| Total Current Assets | \$ 247,845 |
| Restricted - F&AP Grant Fund | \$22,726 |
| Fixed Assets | \$1,149 |
| TOTAL ASSETS | \$271,720 |

LIABILITIES & EQUITY

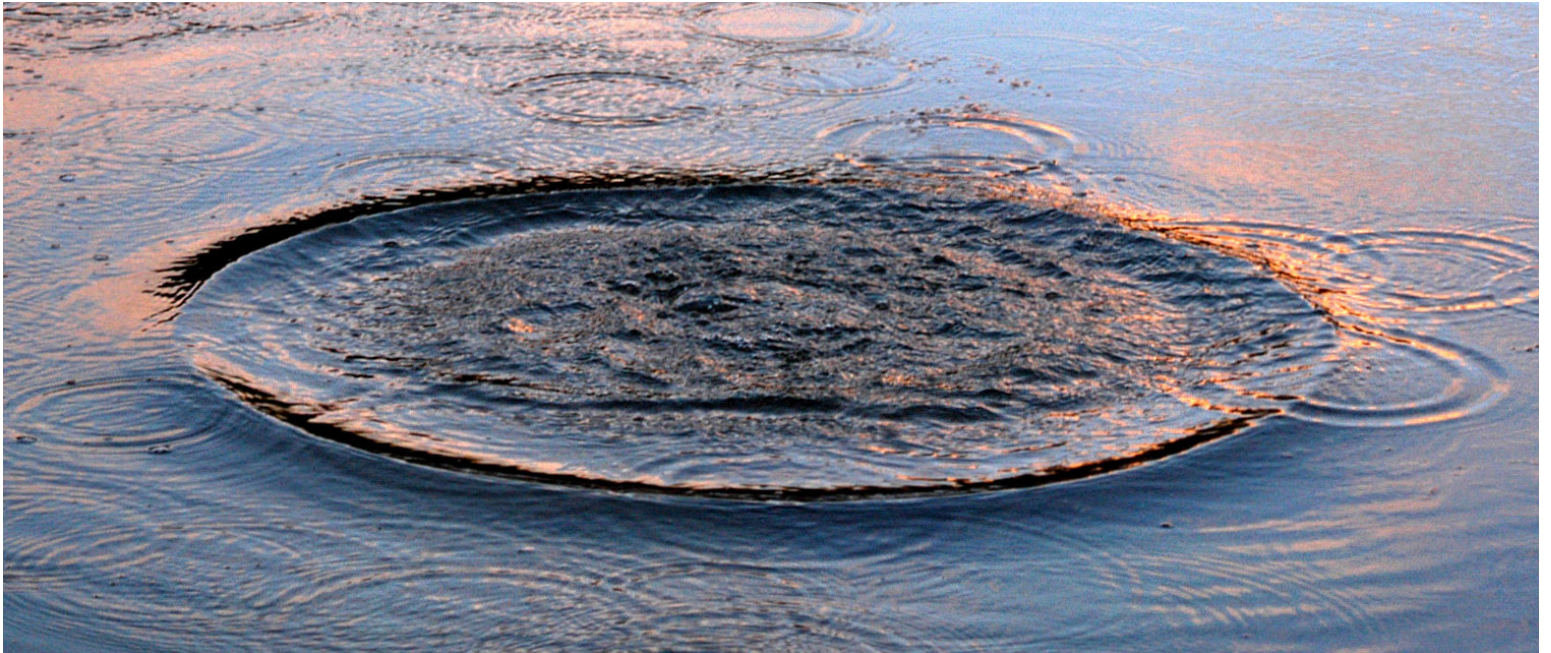
| | |
|----------------------------|-----------|
| Liabilities | |
| Current Liabilities | \$2,871 |
| Restricted Funds | \$22,726 |
| Total Liabilities | \$25,597 |
| Total Equity | \$246,124 |
| TOTAL LIABILITIES & EQUITY | \$271,720 |

STATEMENT OF ACTIVITIES JANUARY-DECEMBER 2019

| | CUFK | FSC | GENERAL | TOTAL |
|--------------------------------|--------------|--------------|--------------|--------------|
| Income | | | | |
| Foundation Contributions | \$0.00 | \$0.00 | \$109,809.86 | \$109,809.86 |
| Foundation Scholarship Council | \$0.00 | \$23,706.77 | \$0.00 | \$23,706.77 |
| CUFK Income | \$159,433.11 | \$0.00 | \$0.00 | \$159,433.11 |
| Interest Income | \$0.00 | \$331.62 | \$0.00 | \$331.62 |
| Total Income | \$159,433.11 | \$24,038.39 | \$109,809.86 | \$293,281.36 |
| Expense | | | | |
| Program Services | \$145,669.07 | \$32,000.00 | \$53,047.47 | \$230,716.54 |
| Fundraising Expenses | \$13,764.04 | \$1,909.77 | | \$15,673.81 |
| Administrative Expenses | \$0.00 | \$0.00 | \$12,805.06 | \$12,805.06 |
| Total Expense | \$159,431.11 | \$33,909.77 | \$65,852.53 | \$259,195.41 |
| Net Income | \$0.00 | \$(9,871.38) | \$43,957.33 | \$34,085.95 |



MINNESOTA
CREDIT UNION FOUNDATION



MINNESOTA CREDIT UNION FOUNDATION

555 WABASHA STREET N. SUITE 200
ST. PAUL, MN 55102

MNCUN.ORG/FOUNDATION
INFO@MNCUFOUNDATION.ORG

612-288-5170, 800-477-1034